

INFINITY AT HOME

SPRUNG FLOOR MADE UP OF MULTILAYER BIRCH PANELS COUPLED WITH THE CUSHIONING SYSTEM OF ELASTOMER BLOCKS FOR PEOPLE WHO WANT TO CONTINUE THE DANCE TRAINING ON THE FLOOR USED BY PROFESSIONALS

INFINITY AT HOME is supplied in the following sizes:

1,5 meters x 2,25 meters · 2,25 meters x 2,25 meters · 3,0 meters x 3,0 meters

This item is also custom made according to customer requirements.

It is ideal for any type of dance, and kit can be completed with dance vinyl floor, portable barres and mirrors.



REDUCTION OF BONE INJURIES RISK



PREVENTION OF MUSCULAR FATIGUE

PANELS

Thickness = 1,8 cm

Size = 150 cm x 75 cm (1.125 mq)

Removable mounting: "dovetail-joint"

Finishing = B/BB

Reaction to fire = class 2 Cfl-s1 (EN 13501-1)

Assembly = by hook closure system (removable mounting)

Please Note: as natural wooden panels, each panel has a grain and shade of its own colour.

CUSHIONING SUPPORT

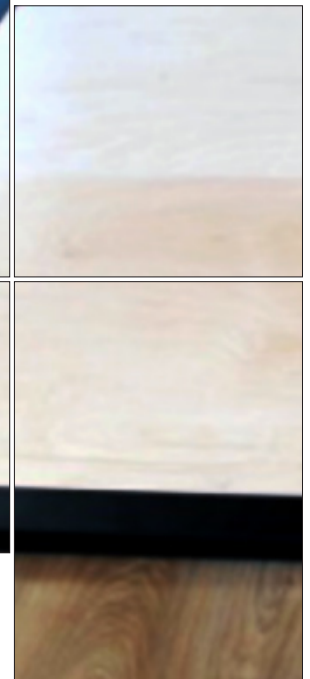
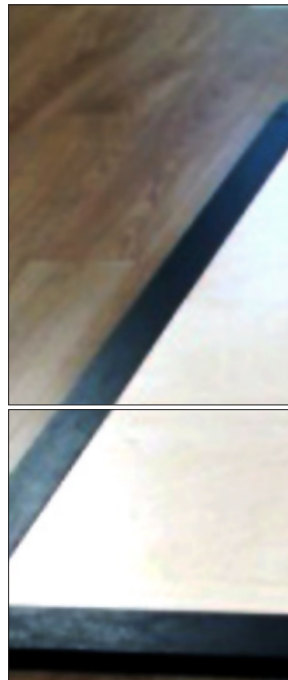
Elastomer blocks (patented compound)

Thickness = 1.8 cm

Size = 5 x 5 cm

Number of blocks per panel = 24

Reaction to fire = Self-extinguishing



INFINITY AT HOME COMPLIES WITH EUROPEAN REGULATION (EN 14904) IN CLASS A4

DESCRIPTION	REGULATION REF	PERFORMANCE
Friction coefficient	EN 13306-4	93
Shock absorption	EN 14808	71%
Vertical deformation	EN 14809	4,3 mm
Bounce	EN 12235	90%
Reaction to fire	EN 13501-1	Cfl-s1

20 YEAR WARRANTY CERTIFICATE

ANTHEO Pavimenti per la danza

Registered Office

Via Monza, 10 - LISSONE (MB)

Head Office

Via Corino, 30 - LISSONE (MB)

Phone n. +39 340 4882088

info@antheopavimentidanza.it
www.antheopavimentidanza.com

ANTHEOpavimentidanza



EXCELLENT COMFORT AT THE TRAMPLING



EXCELLENT ENERGY RETURN